



HOW A CONTAINER **2023**  
FULL OF BICYCLES **ANNUAL**  
CHANGES LIVES **REPORT**

*Changing the World – Two Wheels at a Time*



Bicycles for Humanity

BICYCLES GO IN THE BOX.  
LIFE CHANGING OPPORTUNITIES  
COME OUT.

*Founded in 2007, we are a zero overhead organization where 100% of funds raised directly benefit the cause.*

We partner with community-based organizations in Africa to open local bike shops and have shipped **20,000** bikes to date.

We enhance rural communities by providing healthcare workers, teachers, farmers, and students access to bikes.

We create a sustainable ecosystem through employment at the community bike shop.

Profits of the bike shop are then used to fund local aid organizations and schools.



*Our mission is to empower people in disadvantaged communities through transformative mobility*

*Where mobility is an impeding factor, we improve:*



access to health care,  
educational, and  
social services.



access to life-  
saving retrovirals.



economic productivity  
in communities.



women's access  
to professional  
opportunities.



50%

OF BIKE SHOP STAFF ARE WOMEN

## *Women with bikes overcome adversity*

Women with bikes are more able to get produce, goods, and crafts to market for sale. To further encourage women's empowerment, we train women for staff and leadership positions.

70%

GIRLS ARE 70% MORE  
LIKELY TO GO TO SCHOOL  
IF THE FAMILY HAS A BIKE

# BIKES CHANGES LIVES

*Healthcare workers can travel **4X** farther than they can on foot.*

**BIKE = POWER**

Family unit remains intact

Consistent anti-retroviral supply

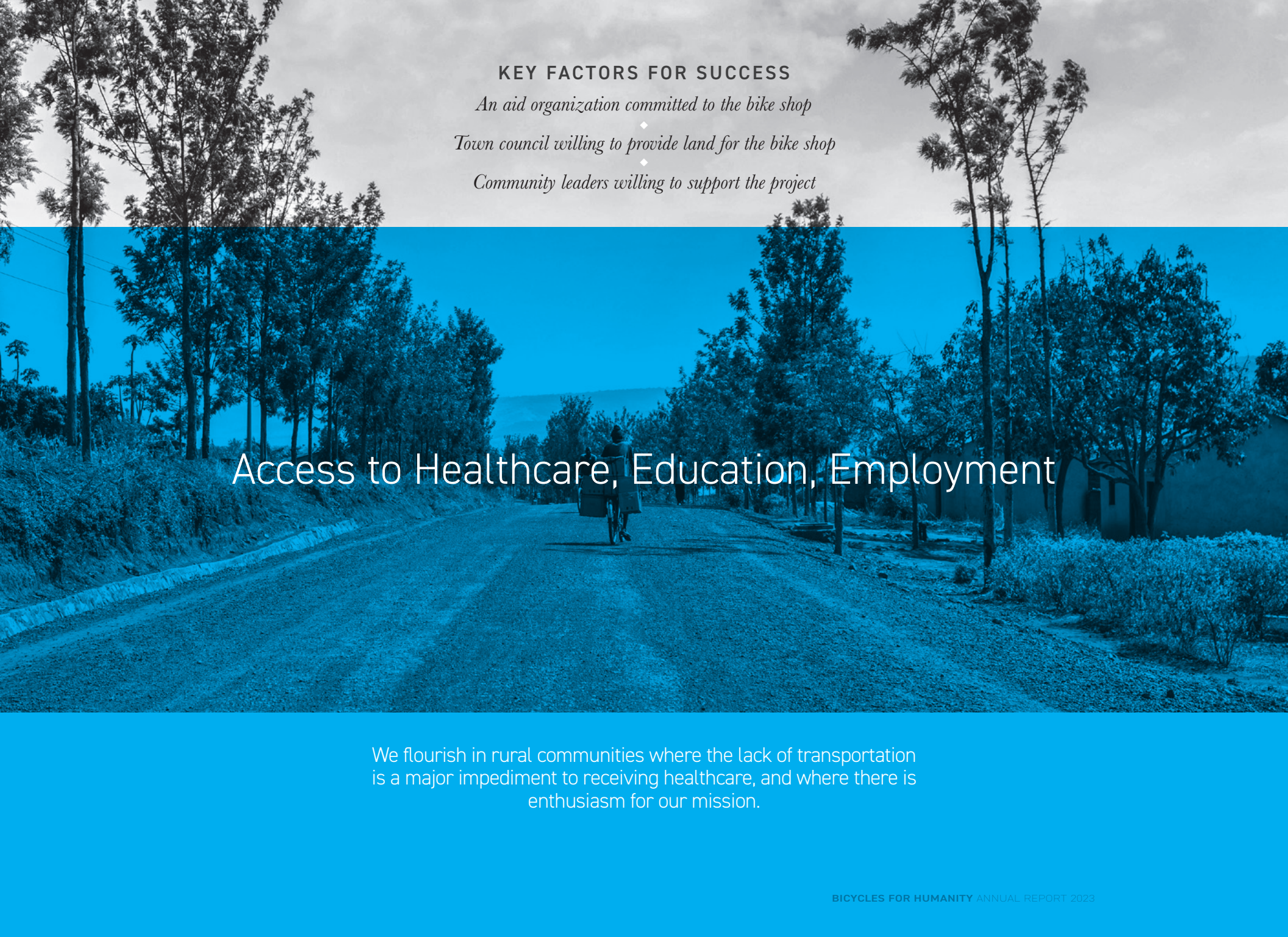
B4H enables healthcare access

*Quasi-urban and transit centers present the greatest concentration of HIV risk.*

*Family members have poor access to healthcare due to distance.*

*Increased financial instability and understanding of the realities of HIV.*

*Family ecosystems are threatened and future lifestyles become uncertain.*



**KEY FACTORS FOR SUCCESS**

*An aid organization committed to the bike shop*

◆  
*Town council willing to provide land for the bike shop*

◆  
*Community leaders willing to support the project*

## Access to Healthcare, Education, Employment

We flourish in rural communities where the lack of transportation is a major impediment to receiving healthcare, and where there is enthusiasm for our mission.

# BIKES AND BOXES HAVE A LASTING IMPACT



We collect and repair  
400 bikes per container.



We ship the container to a rural  
community in Africa.



The container converts into  
a sustainable bike shop.

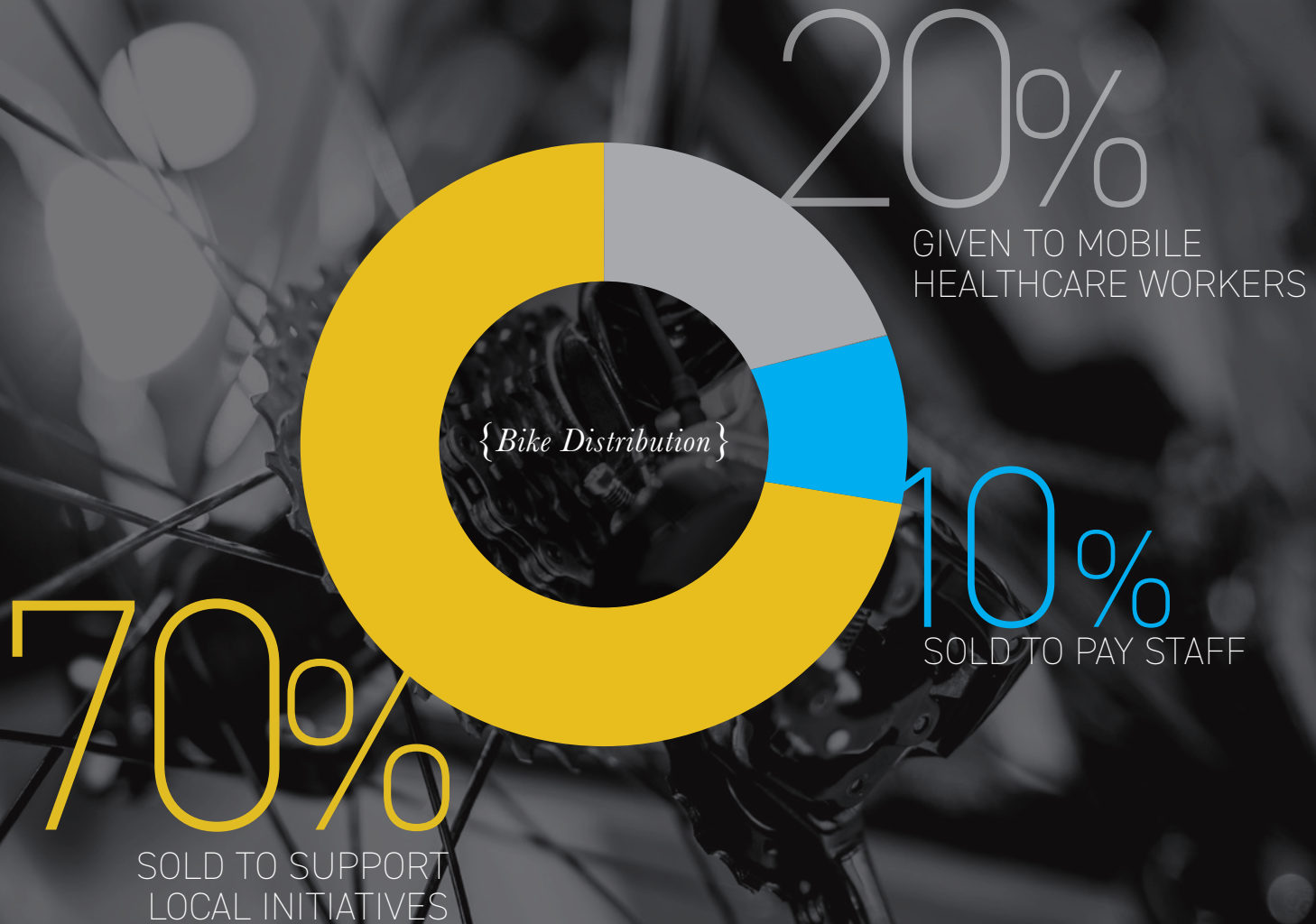


The bike shop provides  
enduring employment.

## THE NET RESULT IS:

funding for local schools, health clinics, and infrastructure projects  
(through bike sales); and mobility for healthcare workers and community members  
seeking education and employment opportunities.

# THE BICYCLE LIFE CYCLE





# THE BICYCLE EFFECT

## TIME

The average person can walk 2.5 miles in 1 hour – this equals access to an area of approximately 20 square miles.

20  
*square miles*

## EFFORT



As time increases, effort to travel increases. Riding a bicycle requires less effort, allowing one to travel four times the distance.



310  
*square miles*

By bicycle, that same person could cover 310 square miles in the same amount of time.

## CAPACITY



Riding a bicycle increases one's capacity to carry a load by five times.

5x

# CURRENT LOCATIONS



9687



# GOTHARD KAMANYA

*Bike Shop Manager & Entrepreneur  
Nkurenkuru, Namibia*

**The Nkurenkuru Uukumwe bike shop** in Namibia represents a number of achievements for Bicycles for Humanity. As our first bike shop, originating in 2008, it was a bit of an experiment. Testing our capabilities. Gothard joined us in 2010 first as a bike mechanic and ultimately ascended to the manager in 2011. Tireless, dedicated and optimistic describes Gothard well. Aside from the bike shop success, Gothard identified a community need. Compulsory education in Namibia begins at first grade. However, just like in the US, parents of Namibia seek to give their children a head start and it is from this idea and Gothard's leadership, the Sirungu kindergarten was born.

Educating 20-30 children each session, the kindergarten has helped underprivileged children of this rural community get ahead, learning their ABC's in a safe and caring education environment with access to clean water.

Following Gothard's leadership and vision for 10 years, our collective community impact continues to thrive. Gothard Kamanya is proof positive, bicycles can change the world.



# JANE WACHILA

*Katima Butterfly Community Center*

The **Katima Butterfly Bike Shop** in the far eastern reaches of the Caprivi Strip in Namibia is lead by a force of nature. We've known Jane Wachila for many years and she runs the Katima Butterfly Community Center which acts as a centerpiece of this neighborhood. Jane is a born leader with a vision to help break the cycle of poverty through education, economic growth and, positive energy.

Aside from the bike shop, there is a school educating and feeding 50 students each day. For many of these children, this may be their only meal of the day. In addition to opening a bike shop in 2021, Bicycles for Humanity supported Jane's vision to create a chicken business, a sewing operation and maybe someday a bakery.

The Butterfly bike shop proves a bike shop can translate to education, nourishment and building an economic engine which can sustain itself into the future. Social entrepreneurship hard at work under Jane's leadership.



*In addition to the bike shop,  
there is a school educating and  
feeding 50 students each day.*

ATTENTION  
CHECK UP CONDITION  
RETURN IN CLEAN CONDITION  
PLEASE TO COMPLY WITH THE  
HAMBURG 5100

ATENCIÓN  
INSPECCION  
HAMBURG 5100

Be Well! Josh H

Cheers + Blessings  
Alisha  
Mick Lee  
- Mike Lee

Hey Charles  
Make the most of  
this moment!!  
God is working  
GARY

Woot Woot  
- Lovie

RAY BIVES!  
ENJOY!!! - Aja

God Bless  
Jane



THE  
RESULT

# UUKUMWE



*The UUKUMWE Bike Shop – means “Togetherness”*

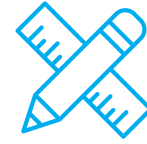




# WE ARE GROWING IN 2023



WE WILL CONTINUE  
TO BE A CHANGE AGENT  
IN RURAL AFRICAN  
COMMUNITIES



FORTIFY

our education partnerships

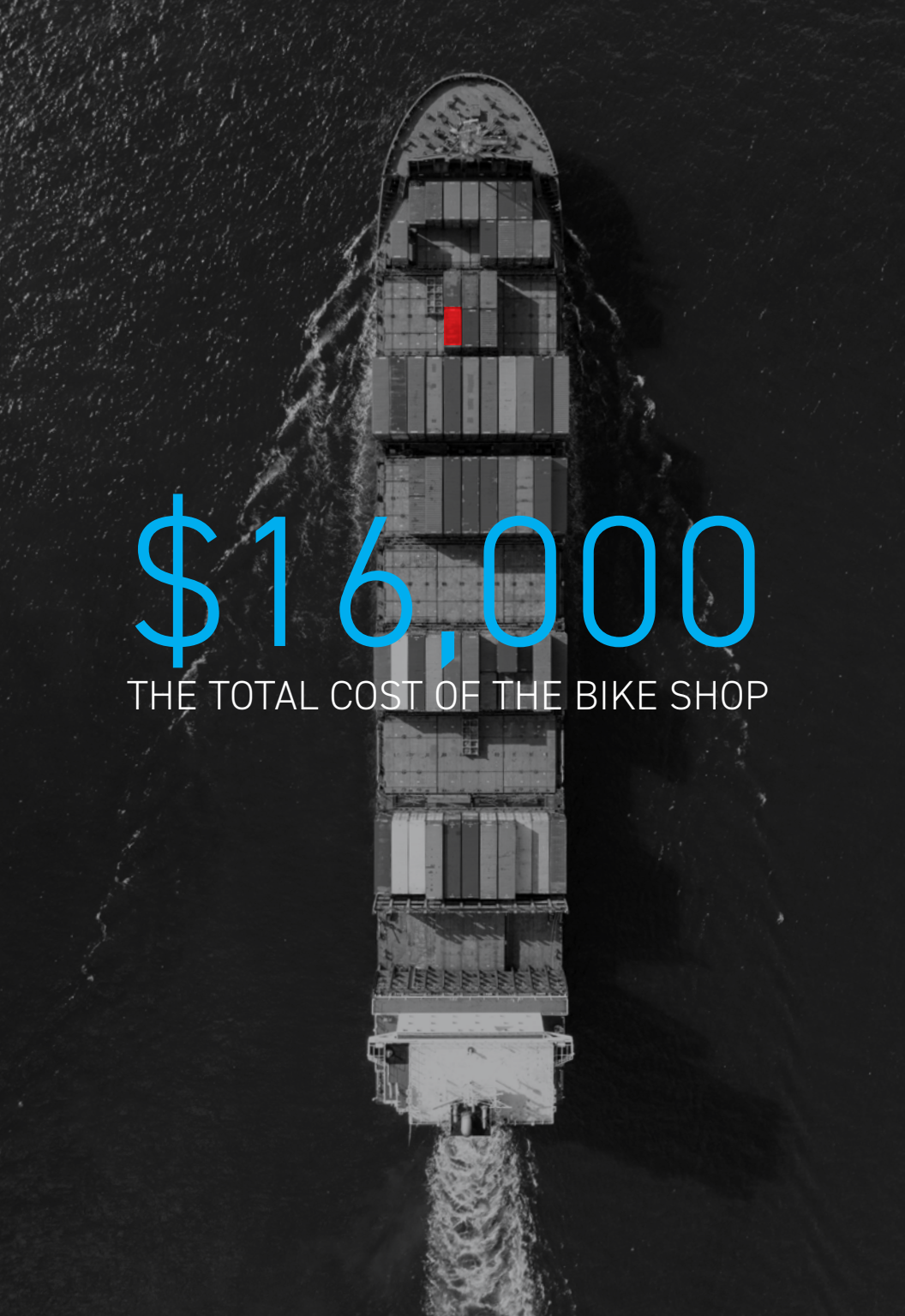


BUILD

Purpose built bikes for africa and  
ship a container of them to Namibia

2000

ship 2000 bikes.



\$16,000

THE TOTAL COST OF THE BIKE SHOP

Shipping containers to house bike shop

3,000

Ocean shipping to Africa

8,000

Land transport to African villages

3,000

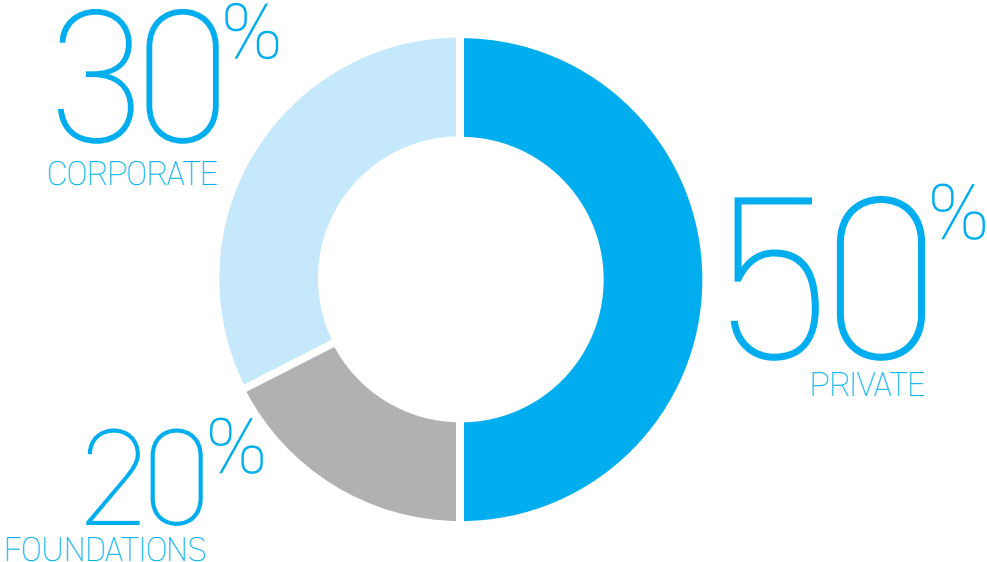
Parts and tools for bike shop

1,000

Retrofit container to a bike shop

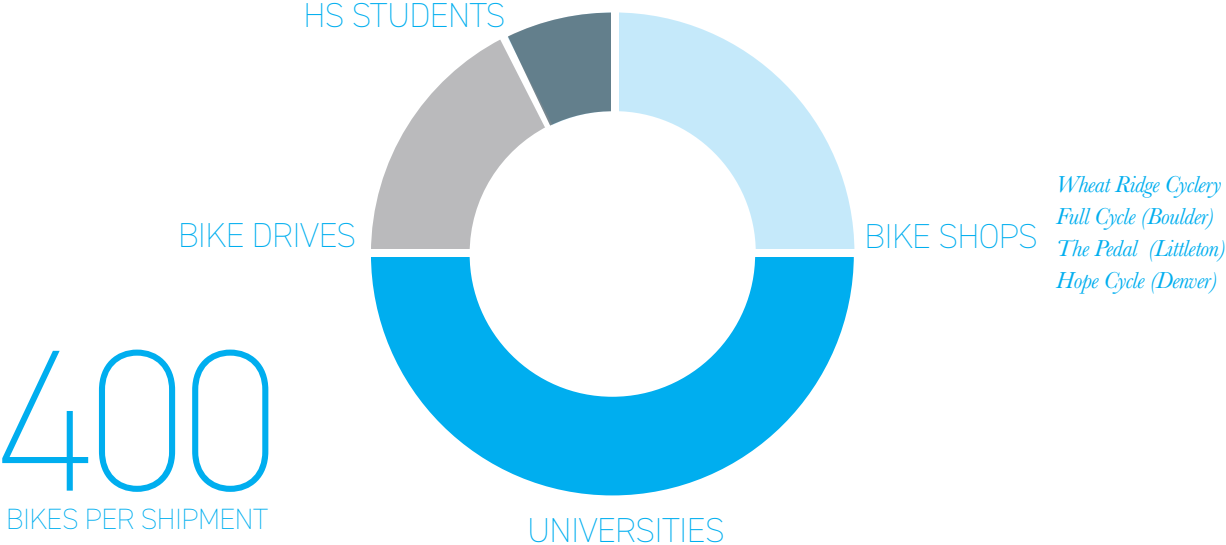
1,000

# FINANCIAL DONATIONS



*Bicycles for Humanity Colorado operates on a 100% volunteer basis.*

# BICYCLE SOURCES





# FINANCIALS 5 YEAR VIEW

YEAR END - AUG 31

	2019	2020	2021	2022	2023
<b>Contributions</b>					
Corporate Giving	\$ 15,000	\$ 32,900	\$ 98,975	\$ 34,500	\$ 40,042
Galas	\$ 41,799	\$ 24,106	\$ 18,283	\$ 24,046	\$ 39,494
Partners/General	\$ 72,865	\$ 53,138	\$ 46,091	\$ 15,000	\$ 53,103
<b>Total:</b>	<b>\$ 129,664</b>	<b>\$ 110,144</b>	<b>\$ 163,349</b>	<b>\$ 85,246</b>	<b>\$ 132,639</b>
<b>Expenses</b>					
Program Expenses	\$ 117,265	\$ 64,483	\$ 90,355	\$ 119,404	\$ 127,158
Marketing/Fundraising Expenses	\$ 6,118	\$ 14,721	\$ 14,130	\$ 12,995	\$ 8,355
Administration Expense	\$ 6,000	\$ 6,750	\$ 8,550	\$ 6,000	\$ 2,000
<b>Total:</b>	<b>\$ 129,383</b>	<b>\$ 85,205</b>	<b>\$ 111,486</b>	<b>\$ 138,399</b>	<b>\$ 147,513</b>
<b>Increase/(Decrease) in Net Assets</b>	<b>\$ 281</b>	<b>\$ 24,940</b>	<b>\$ 51,864</b>	<b>\$ (53,153)</b>	<b>\$ (14,874)</b>

# BOARD OF DIRECTORS & VOLUNTEERS



**Joshua Pace** - Founder & President

**Mark Piquette** - Marketing

**Arturo Ibarra Jr.** - Bike Jenga Master

**Austin Andres** - Events


**Brendan Hemp** - Graphics

**David Dombeck** - Grants

**Cache Mundy** - Digital Voice


**Alisha Lund** - Operations Manager

# GOVERNANCE

 **501 (c)(3)**  
FULLY FORMED NON PROFIT

 **3**  
DIRECTORS WITH  
FULL CORPORATE  
GOVERNANCE

 **IRS**  
IRS APPROVED  
TAX EXEMPT STATUS

 **TRANSPARENCY**  
FULL TRANSPARENCY ON SOURCES  
AND USES OF FUNDS

 **QUALIFIED**  
FOR GRANTS FROM CHARITIES  
AND FOUNDATIONS

 **7**  
ACTIVE BOARD  
MEMBERS

WE WELCOME  
ALL RACES  
ALL RELIGIONS  
ALL COUNTRIES  
ALL SEXUAL  
ORIENTATIONS  
ALL GENDERES  
WE STAND WITH YOU  
YOU ARE SAFE HERE

# PARTNERS

*Education First Pro Cycling*

*University of Colorado*

*Full Cycle*

*The Pedal*

*Hope Cycle*

*Wheat Ridge Cyclery*

*Clear Choice*

*On Trajectory*

*Kelly & Wolner Group*

*Alternative Giving International*



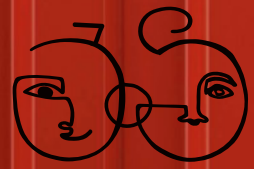


[bicycles4humanity.org](http://bicycles4humanity.org)

BLOVE  
BHOPE  
BCHANGE  
B4H

BLOVE  
BHOPE  
BCHANGE  
B4H

# UUKUMWE



bicycles4humanity

BICYCLES4HUMANITY.ORG

SEARCH BICYCLES FOR HUMANITY COLORADO

